

State of Wyoming Corner Record

(In compliance with the *CORNER PERPETUATION AND FILING ACT*, Wyoming Statutes, 1997, Section 33-29-140, et. seq., and the Rules and Regulations of the Board of Registration for Professional Engineers and Professional Land Surveyors)

Reverse side of this form may be used if more space is needed.

Record of original survey and citation of source of historical information (if corner is lost or obliterated). Description of corner monumentation evidence found and/or monument and accessories established to perpetuate the location of this corner. Sketch of relative location of monument, accessories, and reference points with course and distance to adjacent corner(s) (if determined in this survey). Method and rationale for reestablishment of lost or obliterated corner.

G.L.O. Record: U.S. Deputy Surveyor, Edward D. Bright, Sept., 1868; 80.00 Chains ...Set boulder 16 x 12 x 5 for cor. to secs. 4,5,8,9

Found: 2 ½ ins. diam. iron pipe, 7 ins. out of the ground with a 3 ¼ ins. brass cap marked as noted below. Corner was set in a mound of stone and is approxiametly 150 ft. (paced) south of an old sheep barn.

Set: 5 ft. steel fence post witness 1 ft. north.

Brass Cap Markings

E.P. KELLEY & ASSOCIATES

T12N	R67W
S 5	S 4
S 8	S 9

1971

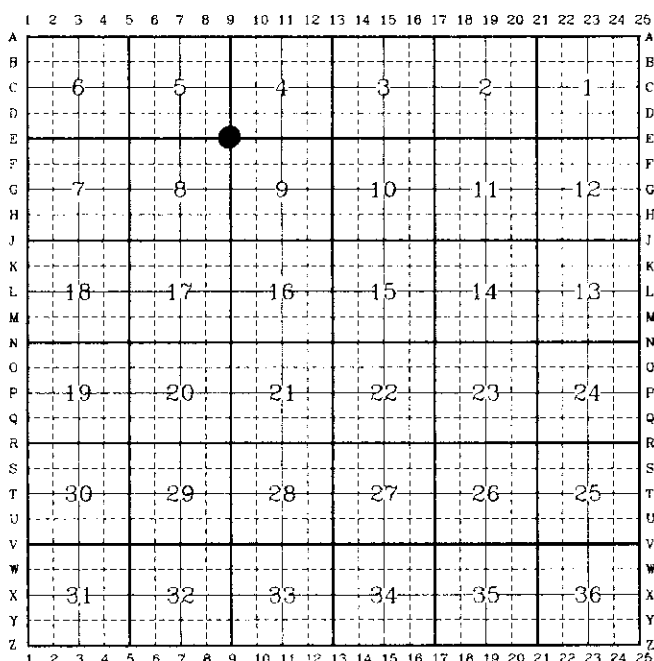
**P.E. & L.S. 638
CHEYENNE**

See back of this sheet for measurements to other found or set monuments in the area.

Date of Field Work: Nov. 16, 1998

Office Reference: A.V.I. Job No.:2-2085C

CROSS INDEX DIAGRAM



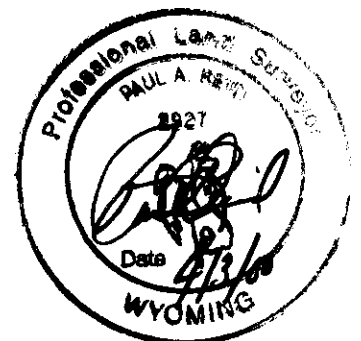
Firm/Agency, Address

Paul A. Reid, P.L.S.
A.V.I., p.c.
2035 Westland Road
Cheyenne, WY 82001

Telephone Number:
(307) 637-6017

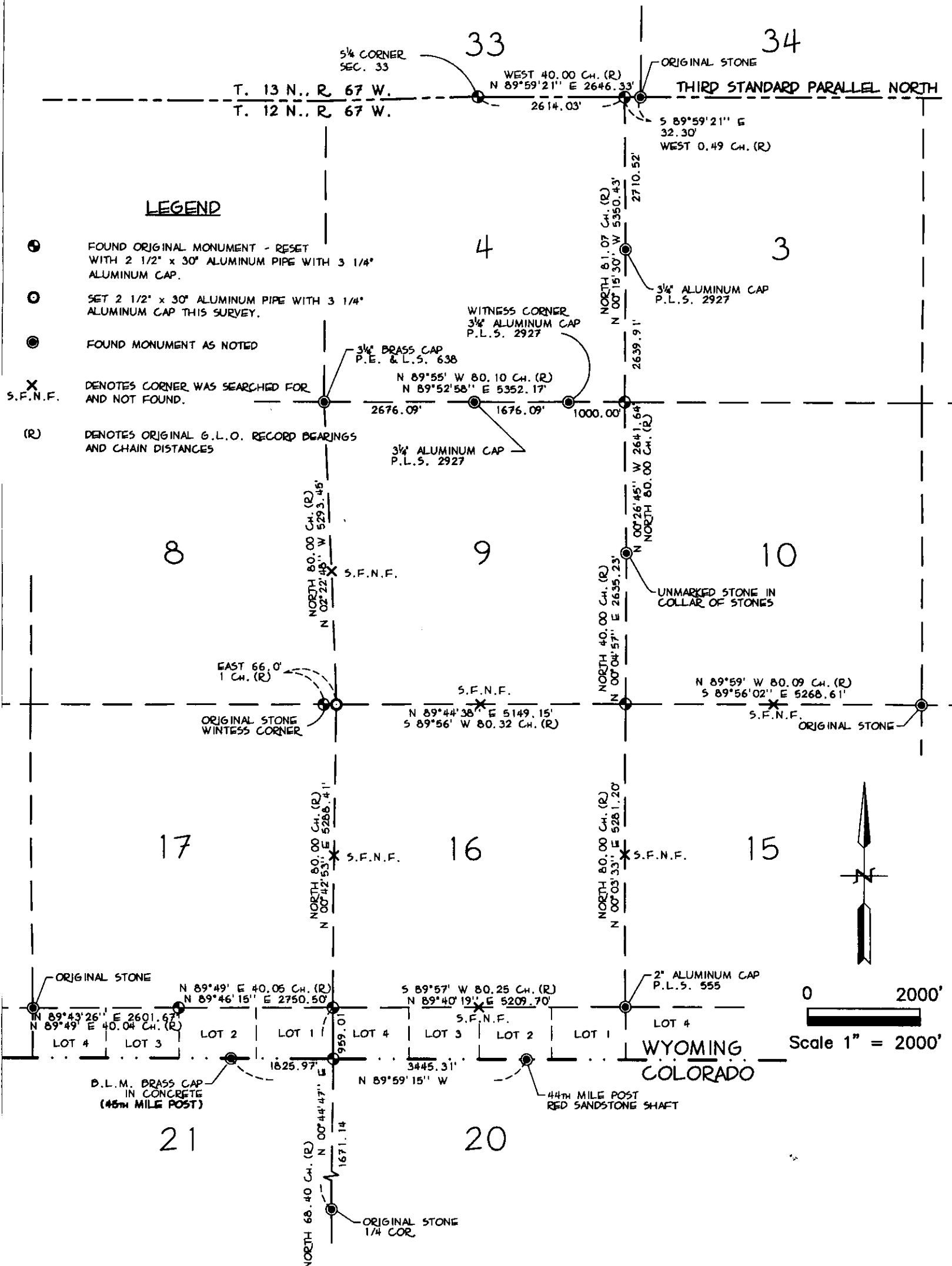
This corner record was prepared by me or under my direction and supervision.

SEAL & SIGNATURE



Corner Name: NW Section:9
SBRPEPLS/PLSW:March 1994

T.12N., R.67W.; 6th P.M. Cross-Index No.: E-9



SKETCH OF SURVEY

T. 12 N., R. 67 W., 6TH P.M.
LARAMIE COUNTY, WYOMING